



# “Piloting Women Lead in Emergencies (WLiE) model in Ethiopia”

*Tsehay Muhie (MPH)\_Humanitarian Program Manager (Gender and Protection)*

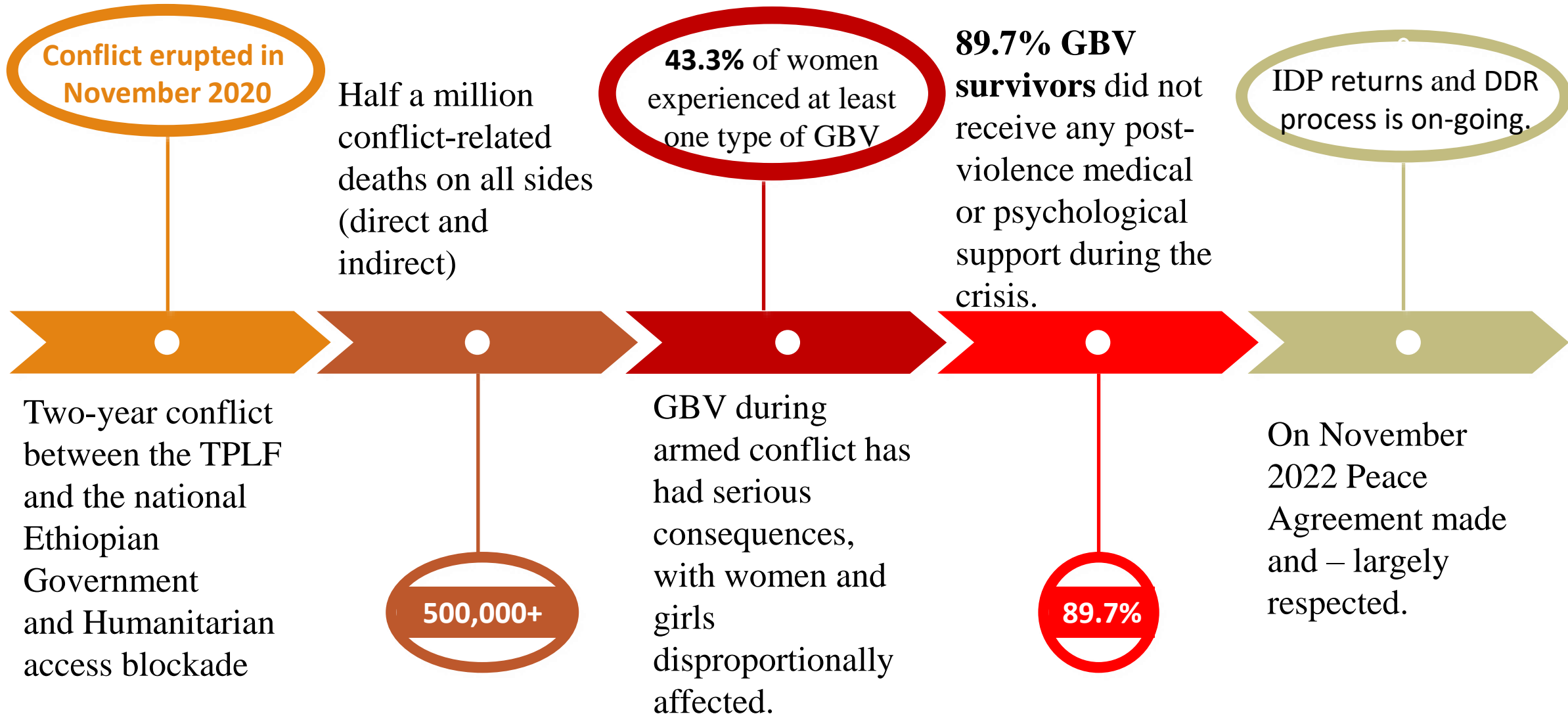
*22 October 2024@SVRI Forum ;  
Cape Town, South Africa*



# Map of Tigray Region, Ethiopia




# The Context of Tigray Region in Ethiopia



# WLiE in Ethiopia-background

---

- Funded by FCDO,  UKaid
- **WLiE** approach integrated with **GBViE** specific interventions.
- February 2022- March 2024-phase I and April 2024-March 2027-Phase II
- **Location:** 4 towns in Tigray Region
- CARE-led, worked with local partner /WLOs-WAT
- IDPs, returnees and affected host communities, with a focus on WGSS activities based in urban health centres.

**Goal:** Women and girls directly affected by crisis have greater access to GBViE response services and greater influence within the humanitarian response.

# What's different about Women Lead in Emergencies?

---

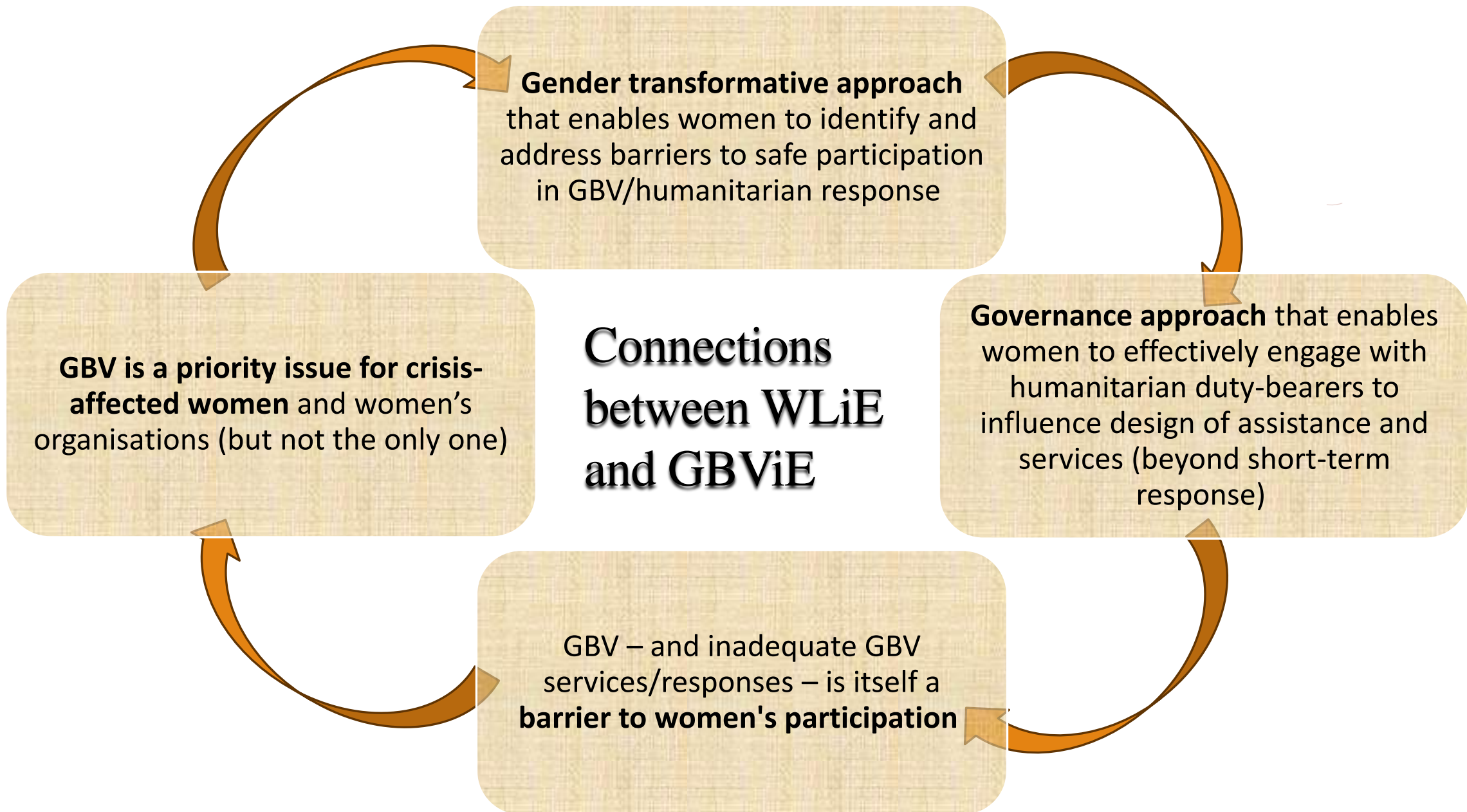


**Shifts power to women**

**Combines a gender & governance lens**

**Provides practical & adaptable  
tools**





# How does WLiE work?

---

## **Engaging Men & Boys**

Activities with male relatives and community leaders to mitigate GBV risks and build allies for women's participation, support for women's decision making and action.

## **Women-led advocacy and networks**

Supporting women's advocacy actions – as individual groups and as networks – to influence duty-bearers at different levels

# Outcomes / Impacts from the **WLiE Model Implementation in Phase I**



## Women's Collective Action:

# Preventing and mitigating GBV...

### The GBViE component included:

- Survivor Centered GBV case management, PSS ,and direct cash support to facilitate referral.
- Mapping GBV services and establishing referral pathways.
- Provision of dignity kits
- Community awareness-raising on GBV prevention/response and available services to enhance uptake.
- Safety audit assessments and advocacy on identified protection risks for mitigation measures.
- WGSS based recreational, Psychosocial Healing and skill building activities.
- Multipurpose cash support to fulfil basic needs and minimize protection risks among vulnerable women and girls.

**Women's Collective  
Action:**

**On GBV prevention  
,risk mitigation &  
Response**

Women's groups-built community awareness on **preventing and mitigating GBV** and on challenging harmful social and gender norms amongst their families, friends and wider communities.



As a result, **most GBV survivors and Women and Girls** visiting the WGSS were referred by women's group members.



Many **WLiE members** are considered by the local government and their communities as a **resource to handle GBV risks** and disseminate GBV related messages.

## Women's Collective Action:

WLiE contribution in GBViE response

*“Through the Women’s Groups efforts, we have seen some GBV survivors have developed trust to disclose their GBV/sexual violence experiences to the women group members who have linked them to the GBV/PSS officers for comprehensive professional support”*

***CARE GBV Officer:***

## Women's Collective Action:

### Women Group Members contribution beyond GBV prevention and risk mitigation:

- *Women Group members have already engaged with decision makers and advocate for themselves.*
- Women group members negotiated with the local government authorities and receive supports including working spaces/land, water and Electric system installation for their action plan implementation.
- Established market linkages for their products
- Accessed additional Loans from the Micro finances and private companies

**WLiE participant:**

*‘The project has increased our confidence, mental healing and acquired skills to influence our husbands and to communicate freely with them about our participation in the group, where previously we would have been challenged for going out ’*

*“We have gained attentions from the relevant governmentt authorities”*

---

WOMEN GROUP MEMBERS IN ADWA TOWN



By taking a combined WLiE and GBV approach, we are:

---

Addressing direct GBViE response needs;

Strengthening locally-led approaches that are accountable to affected communities;

Increasing overall sustainability and impact for those affected by GBV from the individual and collective level, up to the structural level.

# ***According to the endline evaluation report of Phase I, the following major impacts documented***

•**85% women** (in WLiE groups) have actively participated in formal and/or informal decision-making spaces, a **24% increase** since the project began.

•Among WLiE members, **60% currently hold leadership roles**, compared to only 29% among women in the wider community.

•**96% of WLiE members** agreed that they could collaborate with male community leaders to address community needs, compared to 67% non-WLiE members.

•**8 action plans** were delivered by WLiE group members with CARE providing funds and technical support.

*“Our level of participation has increased since we engaged in WLIE group in 2022. I am currently participating in a Kebele and village-level council, as one of the elected representatives. I have been working tirelessly for gender-based violence (GBV) and vulnerable women and girls in my village. I have been advocating for divorce issues and resource allocation by court intervention”*

Member of the  
Adrigat WLiE Group:

## CASE STUDY:- Change at HH Level

### CHALLENGE



A Woman who is a mother of two and Ex-combatant. Her husband also lost his job &The conflict destructed all their livelihoods.

The family ended up shortage of food to eat.

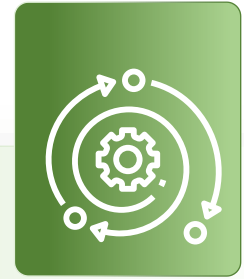
Children were unable to attend school due to shortage of scholastic materials and food.

### SOLUTION



She engaged as part of one of the 8 Women groups ,continually attend in WLiE activities. Her group develop action plan with priority Protection concerns including supporting the WLiE members with IGA . The group chosen Poultry production and selling.

### IMPACT



Using the funds CARE transferred to the WLiE groups, the members were able to done poultry production and able to support their family income. Her children are able to attend school fulfilling all their basic materials. She mentioned that her negotiating skill also improved with her husband as well as with the community leaders.

# Rising Together : The Journey of Equar – A Beacon of Women’s Leadership



## CHALLENGE



“I am Equar Welemariam Tessma, 45 years old, and I have a family of five members. Prior to joining WLiE group, I experienced significant mental distress due to the situation in Tigray. Concisely expressing it turned out to be difficult. For me, public speaking has always been a challenge; I often feared expressing my opinions, even within my own family\*”

## SOLUTION



“I joined in WLiE group in 2022, I have received a wealth of support including psychosocial support, counseling, and various life skill training opportunities and WLiE principles”

## IMPACT



She reported that she significantly built her self-confidence in speaking of rights, beginning at home and extending to various community-level committees. “Ultimately, the WLiE group has empowered me to become a well-rounded woman who actively participates and exercises my rights, accessing, utilizing, and owning resources. Currently, I serve as the chairperson for the WLiE member women's groups and as a representative for women at the Kebele level”



# Lessons Learned

---

**Working with Women-led local partner  
with strong outreach is critical**

**Build acceptance of the WLiE  
model by Key stakeholders**

**Create good partnerships with  
the government stakeholders**

**Be flexible and agile to adapt to  
changing context and addressing  
priority needs of affected  
communities.**

**Engaging men and boys  
is critical in WLiE**





*Thank you*