

Childhood Trajectories of Physical Violence Victimisation and Subsequent IPV in Adulthood in South Africa: BT20+ study

Juliana Kagura, Lilian Muchai, Sara Naicker



DSI-NRF Centre of Excellence
in Human Development

Individual and Society



science & innovation

Department:
Science and Innovation
REPUBLIC OF SOUTH AFRICA



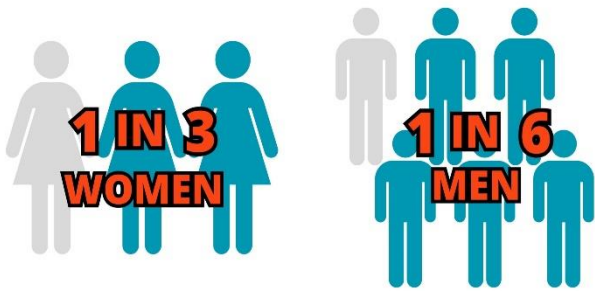
UNIVERSITY OF THE
WITWATERSRAND,
JOHANNESBURG



**WITS School of
Public Health**

Introduction

IPV may have its roots in childhood



Experience IPV in a lifetime

Globally, 1 billion children aged 2–17 years experience some form of violence.

48.6% experienced physical abuse by 18yrs in BT20+ in South Africa

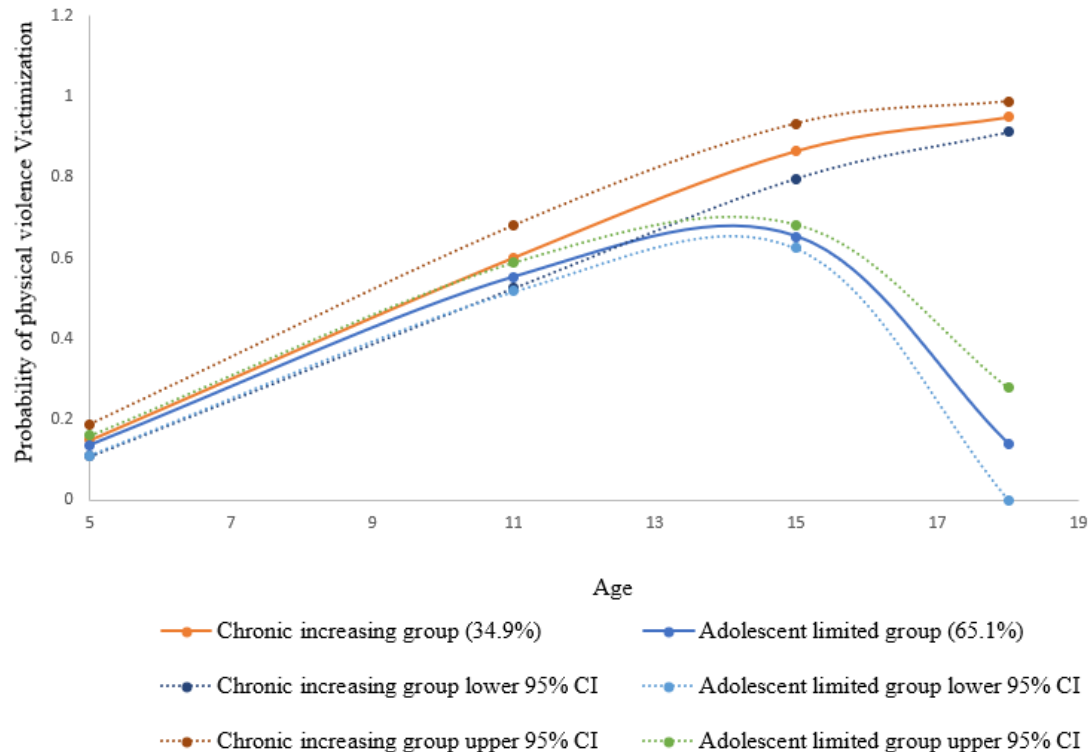
Aim : To investigate the association between trajectories of experience of physical violence and subsequent IPV in this cohort

Birth to 20+ Cohort Study

- Started in 1989 with pilot studies
- Recruited 3,273 babies and their mothers in early 1990
- 23 rounds of data collection, attrition \pm 30%
- Measures on growth, health, development, educational achievement, **exposure to and experiences of violence**
- Current study is secondary data analysis on participants with data (5-18yrs) and IPV at 28

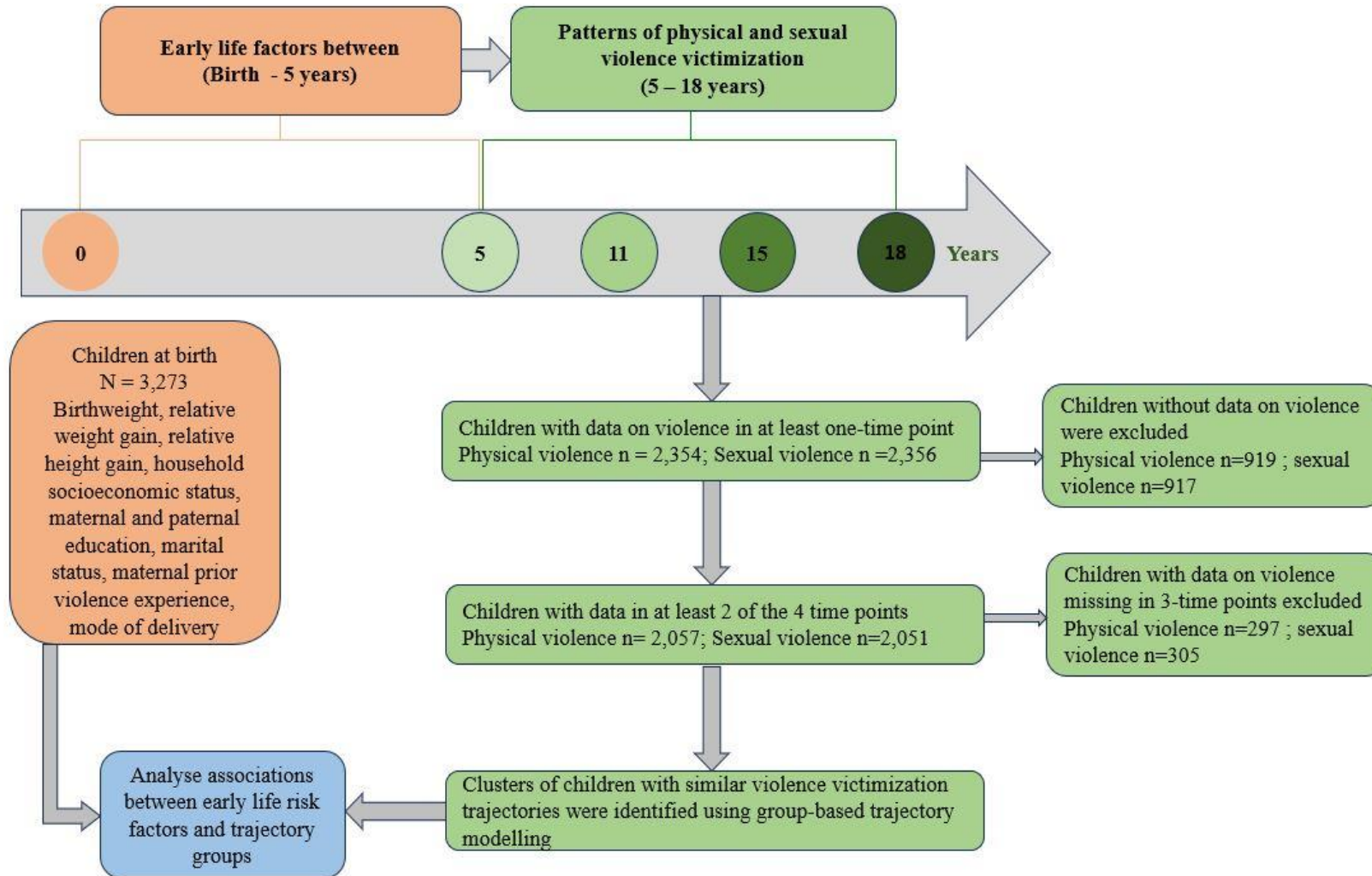


Physical violence victimization trajectories (5-18yrs)



- Computed using Group based trajectory Modelling
- 2 latent classes based on statistical criteria:
 - Chronic increasing group
 - Adolescent limited group

Violence Against Children measures



Intimate Partner Violence (IPV)

- ❑ IPV was assessed at age 28 years

- ❑ Instrument: Conflict Tactics Scale

- ❑ IPV was then operationalized as both perpetration and victimization
 - Perpetration-by participant
 - Victimization-by partner

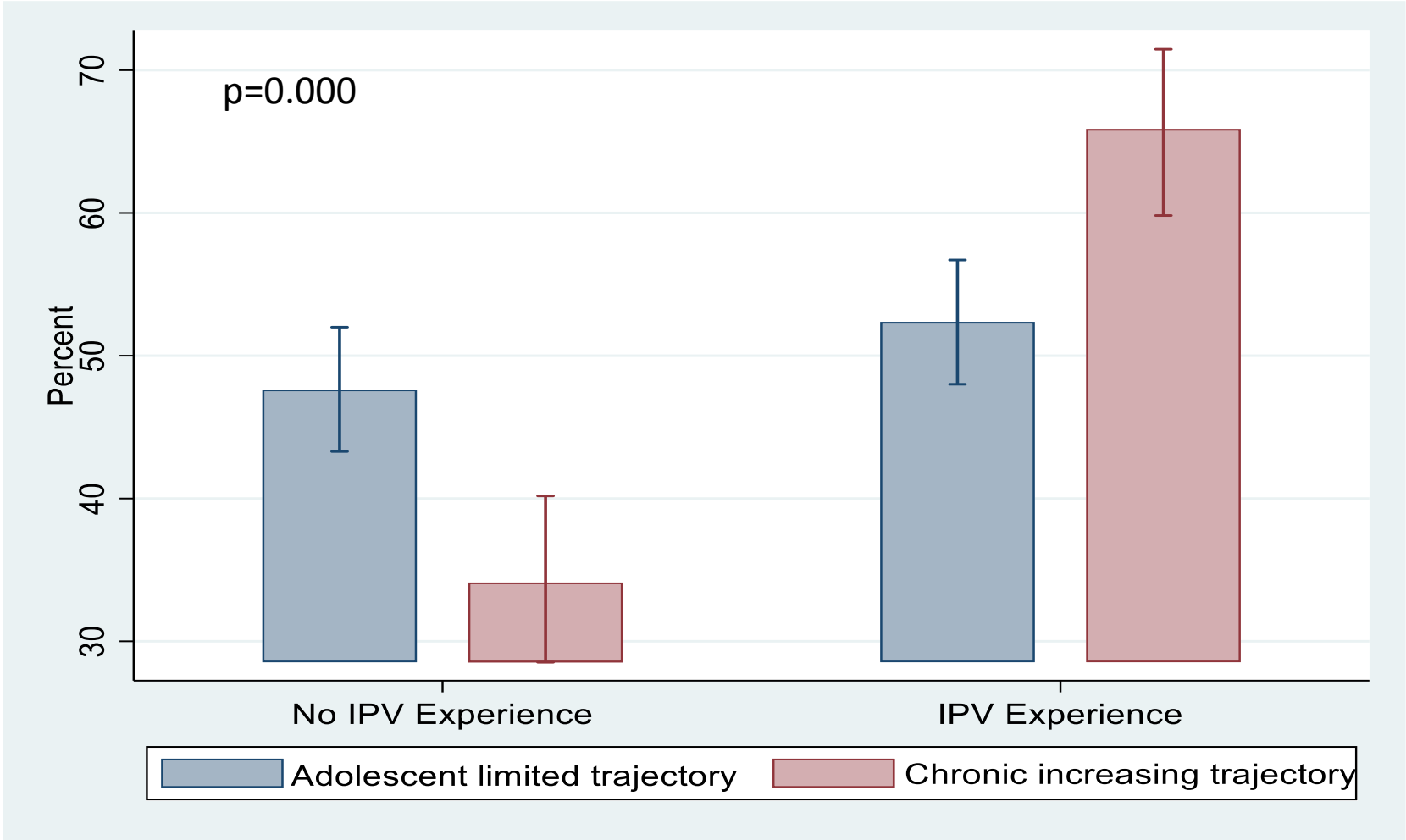
Prevalence of IPV in Adulthood(28yrs)

	N	Prevalence (%)	95% CI
Overall IPV	782	56.8	53.2 to 60.3
Perpetration	781	49.9	46.4 to 53.5
Victimisation	782	56.8	53.2 to 60.3

- ~50% of the participants experienced IPV
- Overall IPV did not differ by sex (59% men; 55% female)
- Victimisation and perpetuation is comparable among males and females

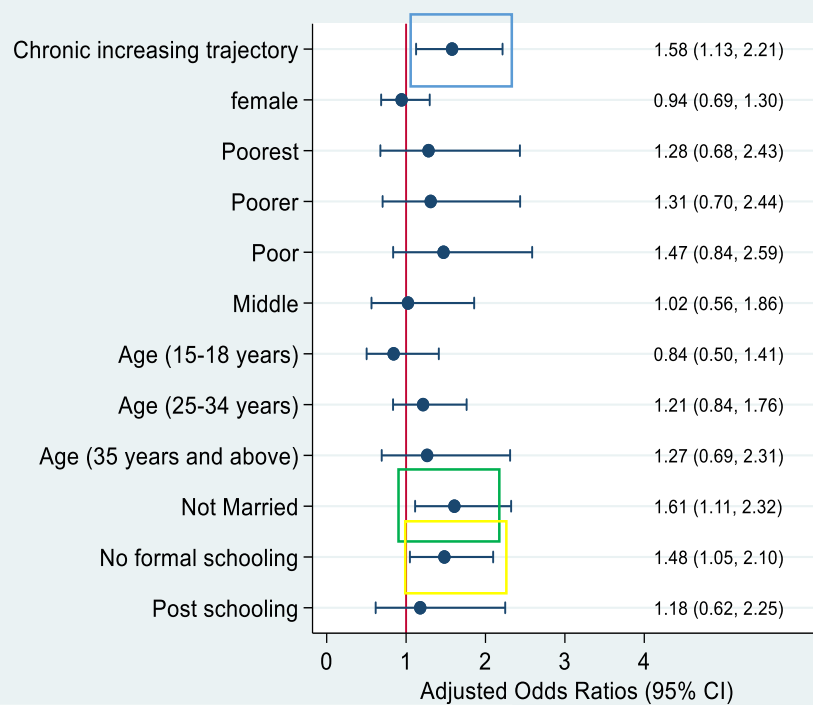
IPV by Physical Violence Victimization

Overall IPV and Physical Violence Trajectory

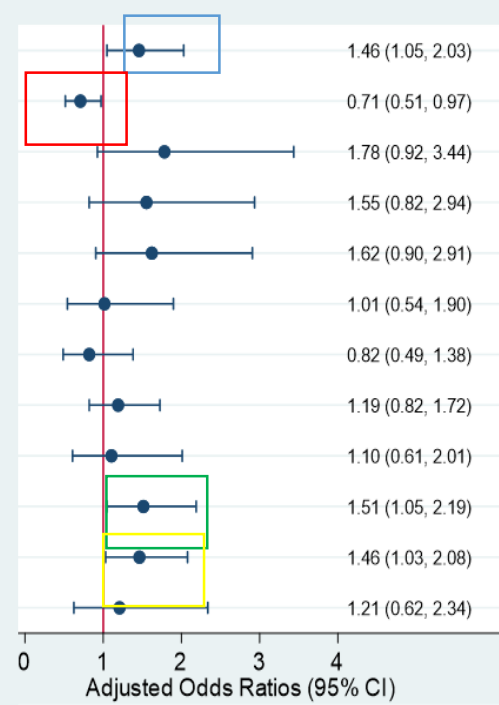


Association Between PV trajectories and IPV

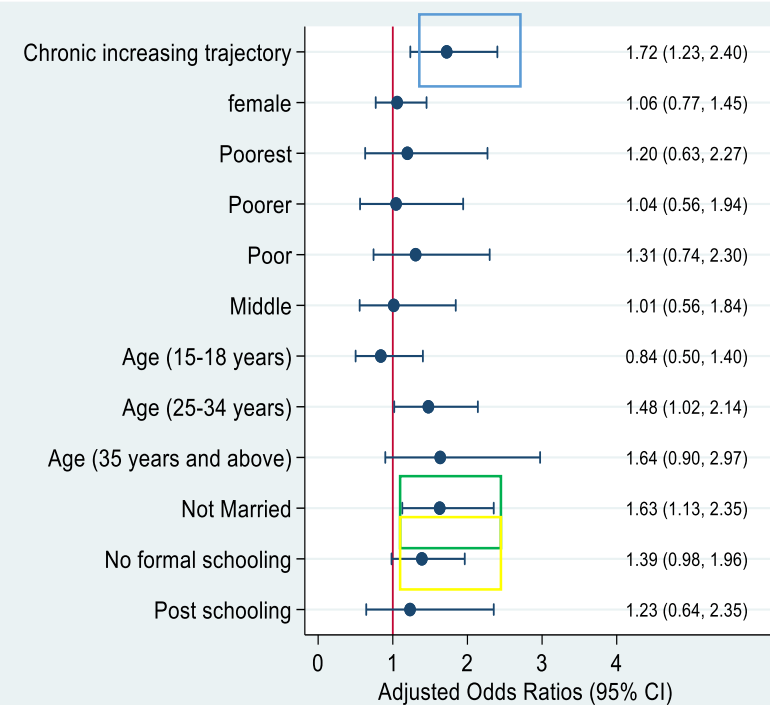
Overall IPV



IPV Perpetration



IPV Victimization



Lessons learnt

Developmental pathways for violence across the life course

Sex differences in perpetration: gender roles or copying genes?

Need for intervention strategies to intercept chronic increasing physical violence trajectories

Role of maternal factors (education and marital status) in preventing perpetuation of violence cycle

Acknowledgements

Co-Investigator: Dr Sara Naicker
Research assistant: Lilian Muchai

